

WINCHAM WORD

Edition 3 – 2023

August, September & October 2023

Working together makes us stronger



**From Wincham Parish Council
Delivered free to every home & business
in Wincham**

*News and information about our village
and close neighbours*



Chairman's Words **by** **Councillor Kenton Barker**



Welcome to the summer edition of the Wincham Word, having said that, looking out of the window at present it is a soggy summer!

Over recent months we have had good progress in a number of areas, a number of which will be discussed in detail within this edition of the Word.

United Utilities are liaising with the Parish Council taking the water issues seriously and investing in the infrastructure to help improve the poor water supplies we have in the area (see page 11). They continue to take a holistic view of the supply to the village. Thanks to all the members of the working party for your persistence in the matter; by keeping our pressure on United Utilities, we will finally improve this issue.

We have had discussions with residents of Earles and Moss Lanes over the ongoing anti-social behaviour issues, (see page 13) and the Police to try and improve the situation. This has improved slightly with the introduction of the parking restrictions; however the abuse being received by our residents from users of the lake is not acceptable.

I hope in coming months moves will be made to help in this area for coming years; this will rely on the ongoing co-operation of the landowners surrounding the lake and the various authorities and the local residents.

Chairman's Words continued

We are progressing with the planned improvements with the park which we hope will culminate with a new fitness track and outdoor gym equipment. Thanks to the hard work of a number of councillors we are finally getting progress in these areas.

As a Parish Council we get involved in a wide range of differing subject areas concerning our village, and we still need a few more councillors to make up our numbers. If you think that you would be interested in joining and helping us improve the village and get more done, please contact our clerk on clerk@winchampc.co.uk.

I hope you all have a glorious summer, and stay safe.

Kind regards
Kenton

Maintenance help needed around Wincham

At times we need maintenance work completed around the village. This could be painting a finger post or some railings, fixing some play equipment (we have play areas in Linnards Lane and on Chapel Street), mending noticeboards, digging, planting, replacing signs and so on.

This work would be ad hoc. Each job would be assessed on its merits and costs/pay would be agreed.

If you are a handy Jack or Jill, please do contact our Parish Clerk, Naomi (contact details on the back page). Naomi will talk you through the legalities of working with the Parish Council and the need for Public Liability Insurance, preparing appropriate Method Statements, Risk Assessments and Professional Indemnity Insurance (we have to protect members of the public).

Contents

3	Maintenance help needed around Wincham
5 to 7	Ongoing issues and updates
8 to 10	Ten new street trees for our Patch of the Planet!
11	United Utilities
12	Wincham Community Primary School
13	Pickmere Lake
14 & 15	Ever thought of joining a Parish Council Working Party; HS2 Phase 2B Public Consultation; Your Bus
16 to 19	Marbury District Police; Summer Fun for the Children
20 & 21	SID Recycled – What Emergency?
22 & 23	The trip of a lifetime – from Wincham to Costa Rica!
24	Wincham and Pickmere Old Friends
25	All you might need to know about Potholes!
26 & 27	How to be sure a Waste Collector is disposing of your waste legally; Keep Wincham tidy
28 to 30	Wincham, Pickmere and District Astronomy Group
31	Where can I go for tea and a chat?
32	The Paint Shop at the Very Green Grocery; Pickmere & District WI
33	The Parish of Lostock Gralam
34 & 35	Coronation – Scarecrow Trail and Afternoon Tea Celebrations
36 & 37	The Friends of Anderton and Marbury
38 & 39	Wincham Community Centre
40	Tours of Chester Town Hall; Great Budworth Cricket Club
41	Pickmere and Wincham Methodist Church
42 to 44	Useful Information; Wincham Parish Council Meeting Dates; Wincham Word; Wincham Parish Councillors & Clerk

Ongoing issues and updates

PARKING ISSUES IN WINCHAM

We have been receiving more and more complaints from residents about the appalling, some times illegal and always inconsiderate parking that is happening around the village.

The Highway Code is very clear about parking at a junction, parking on verges and pavements.

When you are thinking of parking please think of the implications. Are you blocking a driver's view (for example Linnards Lane/ Church Street crossroads)?

Are you making the road too narrow by parking opposite another car (for example on Earles Lane and on Chapel Street)?

If you park (illegally) opposite a road junction, this will not allow drivers to safely exit a road turning.

If you park on the pavement or verge will this allow pedestrians to walk safely?

We have sent all the photos and complaints we have received to the police and also Highways and further action will be taken. Please be considerate and think before you park.

'Vehicles should not normally be parked wholly or partly on verges and footways because doing so causes an obstruction and a danger to pedestrians, people with disabilities, children and other vulnerable people'.

The Highway Code



Ongoing issues and updates

VERGES, PAVEMENTS AND KERBSIDES

Please protect Wincham's grass verges – we are lucky to have them; they are not car parks. Many verges are inside double yellow lines and so anyone parking there is liable to be 'ticketed'.

We continue to have problems with our kerbsides, gullies and drains. We have repeatedly asked CWaC to come and clear these areas and they have done the odd area. We have asked them to return and finish the job as soon as possible. We are 'on their list' but have not been given any action date.

A number of residents have offered to look after their own section of kerbside and we really do appreciate this. We realise that this should not be necessary in an ideal world, but we know that CWaC are understaffed and maybe if we all just did the 'bit' outside our house, that would help keep our drains clear and the village looking nicer.

Here is the link for the "Report it" site.

<https://www.cheshirewestandchester.gov.uk/residents/transport-and-roads/highways/grids-and-gullies>

PLEASE BE CONSIDERATE TO YOUR NEIGHBOURS

The regular grass cutting season is upon us and whilst professional gardeners say cutting the grass earlier in the day is beneficial to the grass, it isn't very socially friendly. CWaC suggest you use power equipment between 10am and dusk in the summer.

If you are having building work carried out, please be considerate to your neighbours.

Building work in public areas and on construction sites in the UK must be in accordance with the 1974 Pollution Control Act, which aims to protect the public against noise pollution as well as air pollution. This act limits noisy work to between **8am and 6pm from Monday to Friday** and **8am and 1pm on a Saturday**.

Ongoing issues and updates

HIGHWAYS WASTE/DEBRIS

A message from Lynn Gibbon – Marbury Ward Councillor

Driving around the Ward it can't help but be noticed there are many pieces of equipment left behind after highways work has been undertaken, some for years, such as cones, sand bags, signs, empty sign stands and left over materials etc.

Therefore, are you up for the challenge of identifying the location of any such equipment across your parish?

If so, please send me an email with the type of equipment and location and a pick-up will be arranged asap. Let's try to make a difference and improve the look of the ward.

lynn.gibbon@cheshirewestandchester.gov.uk [07581 226814](tel:07581226814)

LINNARDS LANE AND CHAPEL STREET PLAYING FIELDS

Every month, the Parish Councillors take it in turn to inspect the playing fields and complete a RoSPA form.

If however you see something in the playing fields that you feel needs urgent attention, please contact our Parish Clerk (details back page)

WELCOME TO OUR NEW READERS

We are delighted to welcome the new home owners who are now living in Brook View off New Warrington Road. We hope you will all be very happy in your new homes and enjoy being a part of Wincham Village.

The Wincham Word is written and delivered once a quarter and this edition has been kindly delivered by one of our existing deliverers. But if there is a resident in Brook View who would be happy to deliver the next edition, due end Oct/beg Nov, please can you contact Carolyn Wall. She organises all the deliveries.

carolynwall@btinternet.com or 07771 891195

Ten new street trees for our Patch of the Planet!



There were times when we didn't think it would happen - but the trees are finally in and have survived their initial trial by drought!

The original idea, proposed by a resident, was to plant trees as part of the Queen's Green Canopy, a UK-wide tree planting initiative marking Her Majesty Queen Elizabeth II's Platinum Jubilee in 2022. Queen Elizabeth apparently planted more than 1,500 trees during her 70 year reign, emphasising the importance of trees to the future of our planet. By the time we finished our little project in May this year we were, of course, celebrating the accession of King Charles III.

Over the years, many of Wincham's street trees have died and not been replaced. The UK has only 11.7% woodland cover (8.7% in England), compared with the EU average of 37% – so every tree counts!

Ten new street trees continued

These trees will enhance our village landscape; they will remove and lock up carbon and release oxygen into the atmosphere; they will support wildlife and filter out pollutants; they can benefit mental health; and it looks as though the day will come when we shall bless the shade they provide.

As you'll know from previous editions of the Wincham Word, it's been a long haul to get to this point. In an ideal world we would have planted late in the year so that the trees could benefit from winter rain. In reality, by the time all the loose ends came together, we decided to get on and plant without further delay!

Fortunately, as ever, residents responded to our request for assistance. The trees are vulnerable in their first year in particular to drought, and need watering thoroughly twice a week whilst in growth, more often in hot weather – a sprinkling of rain just doesn't do the job. The volunteer tree guardians have been asked to water 'their' tree regularly for a year, to check the moisture-retaining mulch and keep it clear of the trunk, to ensure the protective surround and stakes are in good order and not to feed the tree – it's best left to find its own nutrients by establishing a good root system.

Where possible, our volunteers had some say in the location for and final choice of a tree. At this time of year, we were obviously restricted on availability of many varieties, but we are very pleased with what we have. The *Liquidambar*s have good autumn colour, the *Malus* will bear spring blossom followed by crab apples, the *Gleditsia* or Golden Honey Locust has golden leaves in spring turning to lime green then clear yellow. *Pyrus calleryana* 'Chanticleer' is a particularly apt choice for its location as it is an ornamental pear.



Ten new street trees continued

Wincham Lane	<i>Liquidambar styraciflua</i> 'Worplesdon'
Green Lane, small corner verge	<i>Malus</i> 'Evereste'
Green Lane, large corner verge	<i>Tilia cordata</i> 'Greenspire'
Green Lane, even side	<i>Malus</i> 'Evereste'
Hewitt Grove	<i>Liquidambar styraciflua</i> 'Worplesdon'
Linnards Ln, corner J Fryer Ave	<i>Gleditsia triacanthos</i> 'Sunburst'
Linnards Ln, corner Keats Lane	<i>Malus</i> 'Red Sentinel' x 2
Pickmere Ln, crnr Pr Tree Dr even nos	<i>Pyrus calleryana</i> 'Chanticleer'
Pickmere Ln, crnr Pr Tree Dr odd nos	<i>Malus</i> 'Evereste'

We are very grateful to Mersey Forest who provided substantial grants to cover the costs of buying and planting the trees, supporting us in many ways in achieving our goal.

Our Parish Clerk Naomi untangled the procedures and paperwork required for planting trees 'on the Public Highway' with great determination! Cheshire West and Cheshire Highways Department waived their fees as a gesture for the Queen's Green Canopy.

As it was not possible for volunteers to plant trees in these locations, the work was carried out by a local company, RM Groundwork and Landscaping. The trees are now the property and responsibility of Wincham Parish Council.

We hope you enjoy watching them develop.

Please help us to look after them by reporting any issues to Naomi.



United Utilities

Mike Gauterin (UU Customer Service Director) continues to attend our monthly Parish Council meetings to give us an update on all the activities that UU are carrying out on behalf of Wincham.

The Working Party meet a week prior to the Parish Council as well.

One concern he raised is the lack of direct complaints that they are receiving. He knows that there are water pressure issues as we report them to him, but these are not coming direct to UU. This must happen in order for the issues to be logged and fully investigated.

If you have a water pressure/leak problem, please call or contact UU **directly**. Once you have contacted them, please THEN let us know either by facebook post or email to Ros and Naomi.

Here are the contact details you need.

Problems with your water supply - 0345 6723 723 (24-hours-a-day) or you can live chat between 7am-10pm, Monday to Sunday

You can upload the UU app and from this report any issues directly.

Once you have reported your problem directly with UU, please let us know - clerk@winchampc.co.uk and roscasson39@gmail.com

If we want UU to keep taking us seriously re our water pressure issues, we need your continued support and help. You must report any water pressure problems as soon as they occur.

Two investment funding programmes are being progressed. Both require up to two week road closures so UU are liaising with CWaC and they will inform us when approval is granted.

1 - a new improved Pressure Management Valve System which will be sited at Pennys Lane, Rudheath.

2 - A second feed into the village which would be sited at The Slow and Easy Pub in Lostock Gramam.

Wincham Community Primary School



The Oaks Class Laura Miller



In English, the pupils in each class have been reading and writing poems during Poetry Fortnight.

In the Oaks class, the pupils have thought about the environment and especially the Global Goals Life on Land, Life Below Water, Climate Action, Clean Water and Sanitation and Responsible Consumption. This poem has been written by Mason Harwood, inspired by the poem Give and Take by Roger McGough.

Give and Take by Mason Harwood

I give you tranquil lakes,
You give me poisoning plastic water bottles.
I give you jewels, shining brightly,
You give me fiery fossil fuels.
I give you beautiful oceans full of special species,
You give me corrupted coral reefs.
I give you crops of wheat,
You give me nutrientless-bread-factories.
I give you forests full of berries bursting
and delicious,
You give me effortless estates everywhere.
I give you a hopeful population,
You give me pollution populating.
I give, I give, but it's never enough.

A species extinct because of an exhaust
pipe's pump
You can never have enough.

I give you...up.



Pickmere Lake



Pickmere Lake and the surrounding villages are lovely places to walk and visit. But since Covid the number of visitors has increased to a number where the area, the villages and the infrastructures no longer can cope.

Over the past few months, more meetings have taken place. These have included our MP Esther McVey, our Police and Crime Commissioner John Dwyer, Marbury Ward Councillors, residents, Northwich police and local parish councillors. The residents of Earles and Moss Lane have had enough. The aggressive, unpleasant and anti-social behaviour of many of the visitors coming to our village is reaching levels that are not only unacceptable but present Health and Safety risks and cause severe safeguarding concerns.

We have all agreed that we need to do things differently if possible, to try and curb the anti social behaviour in Wincham, Marston, Pickmere and Aston-by-Budworth. Many actions are being investigated and we will keep you updated with their developments.

Ever thought of joining a Parish Council Working Party?

Your Parish Councillors are a small band of (unpaid!) volunteers who do their best to improve all aspects of life in the village – but they can't do it all on their own!

They are assisted by several Working Parties; these include one or more Parish Councillors and a number of residents with a particular interest and little bit of time or expertise to share.

Please get in touch with Naomi, our Parish Clerk, if you are interested in finding out more. The current Working Parties include:

- ❖ Road safety
- ❖ Water supply
- ❖ Environment
- ❖ Memorial Garden
- ❖ Social activities
- ❖ Ground Maintenance
- ❖ Pickmere Lake issues

HS2 Phase 2b Have your say: Public consultation

The UK Government has introduced Additional Provision 2 to the High-Speed Rail (Crewe - Manchester) Bill into Parliament.

Additional Provision 2 is accompanied by a Supplementary Environmental Statement that reports the environmental impacts of the planned new railway with the proposed changes to the design.

The consultation is open to everyone until 11.45pm on 31st August. Visit the website for more information and to find out about webinars in your local area.

www.HS2.org.uk/the-route/crewe-to-manchester/

Your Bus

Big news!

Your Bus has arrived and we're here to tell you about our incredible **Dial-a-ride routes!**



Get ready to experience a transportation revolution like no other. We're all about making your daily journeys smooth, comfortable, and enjoyable. Imagine hopping on board, knowing that you'll reach your destination hassle-free. Forget the stress of driving or navigating through traffic; sit back, relax, and let us do the driving for you. Join us on this thrilling journey as we connect you to the places you love and introduce you to new horizons.

<https://www.yourbus.info/useourservices>

Monday
Northwich, Leftwich, Kingsmead, Davenham, Moulton, Wharton, Winsford, Winsford Ind Estate, Bostock, Broken Cross, Lostock, Rudheath, Northwich.

Tuesday
Northwich, Hartford, Sandiway, Cuddington, Blakemere Craft Centre, Abbeywood Gardens, Delamere, Hatchmere, Norley, Kelsall.

Wednesday
Northwich, Rudheath, Lach Dennis, Plumley, Pickmere, Great Budworth, Antrobus, Whitley, Comberbach, Marbury Park, Anderton Boat Lift, Barton, Wincham.

Thursday
Northwich, Weaverham, Crowton, Norley, Kingsley, Helsby, Frodsham, Preston Brook, Acton Bridge.

Friday
Northwich, Hartford, Blakemere Craft Centre, Cotebrook, Shire Horse Centre, Tarporley, Little Budworth, Whitegate, Winsford.

DIAL -A- RIDE
01606 784100

Supporting people in our community



Your Bus services are in addition to the local 9 and 89 buses.

Parish Council Report for June/July 2023

Diana.Wiggins@cheshire.pnn.police.uk

Or ring 101 in a non-emergency
999 for all emergencies & 111 for NHS



WILDLIFE

Report of neighbour cutting hedges whilst birds nesting on Ashwood Park - Rural crime dealing with report.

Report of Hedge being cut during season when birds are nesting - this has been reported to Rural crime team. Earles Lane.

THEFT OTHER:

Report of coats and kit being stolen by male at Wincham park - Male was caught and arrested.

Report of hubcaps being taken off vehicle on Earles Lane Wincham - incident ongoing.

Other incidents of note reported:

Tree fallen onto Linnards Lane Wincham near to 556 on 21/6/23

Youths at location of Thor Chemicals in vehicles believed to be driving anti socially around the roundabout.

General Fly tipping.

Report a crime

<https://www.cheshire.police.uk/ro/report/ocr/af/how-to-report-a-crime/>

Does it feel like the situation could get heated or violent very soon? Is someone in immediate danger? Do you need support right away? If so, please call [999](tel:999) now.

If you have a hearing or speech impairment, use our textphone service 18000 or text us on 999 if you've pre-registered with the [emergencySMS service](#).

If you've witnessed or been the victim of crime please report it to us. Reports are dealt with by our control room in exactly the same way whether you report it online or by telephone.

Fun and Games

SPORTS IN THE PARK EVENTS

Linnards Lane Playing Fields

Once again, this summer, the Police are arranging some Sports in the Park events.

Saturday 5th August 3-5pm

Friday 18th August 1-3pm

The police will provide all the necessary sports equipment.

Please do come along. All welcome.

Indoor Climbing Sessions at Peak Pursuits, Audley

Friday 16/6/23 session will between 18:30 – 20:30.

Friday 7/7/23 session will between 18:30 – 20:30.

Thursday 3/8/23 session will between 11:00 – 13:00.

Wednesday 9/8/23 session will between 18:30 – 20:30.

Monday 14/8/23 session will between 11:00 – 13:00.

Friday 18/8/23 session will between 18:30 – 20:30.

Thursday 24/8/23 session will between 11:00 – 13:00.

Wednesday 30/8/23 session will between 18:30 – 20:30.

Friday 8/9/23 session will between 18:30 – 20:30.

Friday 29/9/23 session will between 18:30 – 20:30.

Wednesday 1/11/23 session will between 18:30 – 20:30.

All the sessions are free of charge and transport is provided.

If you're aged 10 -16 and interested in attending, please contact PCSO Phil Hambleton by Text on 07773 222948, Shakerley Police Facebook page or email philip.hambleton@cheshire.police.uk

and leave me your contact details.



Places where kids can eat free during the summer holidays

ASDA

Kids eat for £1 All Day, Every Day at Asda cafes, with no adult spend required.

TESCO

Kids eat free with a purchase of 60p+ from Mon 24th July - Fri 1st September 2023

SAINSBURYS CAFES

Kids eat for £1 with the purchase of an adult hot main. From 11:30am every day.

BEEFEATER & BREWERS FAYRE

Two children under 16 can get a free breakfast every day with one paying adult!

THE REAL GREEK

Kids under 12 eat FREE every Sunday for every £10 spent by an adult

M&S

Free Kid's Munch Meal when you spend £5+ on non-kids food or drink at M&S Cafés

TRAVELODGE

Buy 1 Adult Breakfast from just £8.99 & up to two kids eat breakfast for free

HUNGRY HORSE

Kids eat for £1 on Mondays & up to 2 Kids get free breakfast with 1 adult breakfast

PREMIER INN

Buy 1 Adult Breakfast from just £8.99 & up to two kids eat breakfast for free

SIZZLING PUBS

Every Monday to Friday, 3 - 7pm, kids' mains are £1 with every adult meal.

IKEA

Kids get a meal from 95p daily from 11am

MORRISONS

Spend £4.49 & get one free kids meal all day, every day. FREE Crumpets also available

GORDON RAMSEY RESTAURANTS

Kids under 8 eat FREE all day, every day at selected Gordon Ramsay restaurants

PRETO

Kids up to age 10 eat free all day, every day with paying adults at Preto in Half Terms

BILLS

2 kids eat FREE Monday - Friday from Monday 24th July - Friday 1st Sept 2023

BELLA ITALIA

Children eat for £1 with any adult main. The offer is valid 4-6pm Mon to Thurs.

WHITBREAD INNS

Two kids under 16 eat for FREE with every adult breakfast purchased

SA BRAINS PUBS

Children can eat for £1 with any adult main. Valid All Day Wednesdays

TABLE TABLE

Two children under 16 can get a free breakfast every day with one paying adult!

PAUSA CAFE @ DUNELM

Kids get 1 mini main, 2 snacks & a drink FREE with every £4 spend after 3pm

YO! SUSHI

From Mon 17th of July until Fri 11th of Aug kids eat free with every £10 adult spend

FUTURE INNS

Under 5s eat for free with any adult meal.

Thanks to moneysavingcentral.co.uk for this list



Northwich
town council



RUN BY
NMSC
NORTHWICH MULTI-SPORTS CAMP

FREE lunch*
Sports for all
Great fun

SUMMER SPORTS CAMPS

HELD AT
NORTHWICH RUGBY CLUB, MOSS FARM

Water fights!

Multi-Sports Camp

3 days each camp
Monday – Wednesday
8.50am – 3.15pm

**FOR AGES
6-11YRS**

- 1 24th, 25th, 26th July
- 2 31st July, 1st, 2nd August

SCAN TO BOOK



staylocal.info/multisports

Pitch Up & Play

3 days each camp
Monday – Wednesday
11am – 2pm

**FOR AGES
12-16YRS**

- 1 7th, 8th, 9th August
- 2 14th, 15th, 16th August
- 3 21st, 22nd, 23rd August

SCAN TO BOOK



See you there!

staylocal.info/pitchup

BOOK NOW!

Just £10 per camp
*FREE for anyone on free school meals

SUPPORTED BY



WEIGHT LOSS + MUSCLE GAIN + NUTRITION

SID RECYCLED – What Emergency?

Few of us can escape the news. Even if you only stream programmes or download podcasts for your general entertainment and interest, there are still various other social media platforms and email providers where you will often see current affairs mentioned or links to them with attention grabbing headlines.



In amongst the latest celebrity gossip, updates on the war in Ukraine and the latest Royal bust up, there are frequent references to climate change or climate emergency.

Conspiracy theorists will have you believe that global warming is not real but it is hard



not to realise the impact we have had on the planet when we've had record breaking temperatures again and multiple storms.



It is sometimes difficult to accept that the way we live and our behaviours towards household waste disposal and energy and fuel consumption, as well as shopping habits, are part of the cause. It is also hard to imagine that

turning down your hot water temperature or heating thermostat in the winter by 1 or 2 degrees is not only going to save you money but have a positive impact on the wider world.

As such, we probably don't do as much as we could or indeed should when it comes to trying to reduce our carbon footprint. Some of us might not even be aware of what else we can do other than use our kerbside recycling scheme and local recycling centre to maximum effect.

SID has long promoted other ways we can reduce waste and in more recent years within this magazine have included some of the things we can do as a village to reduce our energy consumption.

SID RECYCLED – What Emergency?

We have mentioned sites you can use to offer items free or sell to make a few extra pounds. We also organised a Toy Swap in early 2020 and tried to start a children's book re-use scheme the same year. Then of course Covid stopped us all in our tracks!



Chester West and Chester Council actually declared a Climate Emergency in 2019 and their website has a dedicated section on Climate Emergency

(<https://participatenow.cheshirewestandchester.gov.uk/climate-emergency>).

Here you can watch a short video to find out what CWAC have been up to, to try and help the borough become carbon neutral by 2045. There is also information on how you can get involved, and an area to post what you have been doing to tackle the Climate Emergency.

In June they held a free exposition in Chester to allow people to see 'green' technologies to help reduce bills and reduce carbon emissions in the process. In July it was 'The Big Sustainability Festival' with 3 events during the month across the borough and in September there is a 'Sustainable Cheshire Festival' run by Eco Communities in Grosvenor Park where you can find out what other Cheshire villages are doing to be more sustainable and maybe bring back some ideas for projects in Wincham that you'd like to help set-up with support from SID.

Being more sustainable, to coin a phrase, is not rocket science. It just takes a few good ideas and people coming together to put them into action. If you have any thoughts on how Wincham can become more sustainable please contact SID.

SID Recycled Facebook

www.facebook.com/groups/2484382738475130/

SID Recycled email sid.recycled@gmail.com



The trip of a lifetime – from Wincham to Costa Rica!



Wincham residents Tyler Morgado, aged 12, and his friend Elliott Webster, 13, are planning the trip of a lifetime – with a little help from their friends!

Tyler and Elliott, past pupils of Wincham Community Primary School, now attend Knutsford Academy where staff are working with Camps International to organise the 2025 expedition.

Elliott and Tyler tell us that they will be helping local communities in Costa Rica, taking part in conservation projects and teaching English to children: 'Our home for 4 weeks will be the beautiful and biodiverse remote rainforest of Costa Rica. We will work alongside conservationists and local people to protect the natural environment, we will learn about innovative and sustainable solutions to environmental issues and get involved in inspiring projects to support the environment, wildlife and community.' They'll also undertake a PADI Open Water Dive Qualification, learning to scuba dive in warm tropical waters, surrounded by exotic fish and the occasional turtle.

Each of these adventurous boys will need to raise £4,950 to take part. They have a long way to go, in every sense! They have organised two events so far, in the village.

The trip of a lifetime – continued

They held a cake sale on 22nd July and are planning more of these. Keep an eye on the noticeboards around the village for more information.



Tyler and Elliott are planning a sponsored bike ride and have more ideas on the way!

If you would like to help them on their way, you can donate on their gofundme page. Companies might like to consider the package that Elliott and Tyler have devised. The boys are grateful for any support they receive to help them on this amazing adventure.

Scan the QR codes above if you would like to donate

Or follow Elliott and Tyler's progress on

<https://www.facebook.com/ElliottandTylerCostaRica2025>

GENERAL ADVERTISING IN THE VILLAGE

If you wish to put up A-Frames or banners around the village please contact Naomi, our Parish Clerk, first.

Please do not attach posters to any of the railings in the village.

Wincham and Pickmere Old Friends welcome new members!

This long established group would love to meet you! Participants tend to be of retirement age and enjoy getting together for a couple of hours of convivial company each month.

Organiser Lesley tells us that tea and coffee are on offer along with refreshments, which vary from biscuits to home-made cake to a winter hotpot! There's plenty of opportunity to chat or join in with a raffle, Bingo and Hazel's quiz. You're very welcome to come along to a meeting at no cost to see how you like it – give Lesley a call to find out more or to let her know you are coming along. Transport (including wheelchair accessible) can be arranged. Rumour has it that there will be home-made scones at the August meeting!

When? 1st Saturday of each month, 2-4pm

Where? Wincham Community Centre

Cost? £5 per year; tea etc 25p; raffle 25p; Bingo £1

Contact Lesley on **01606 44185**

Wincham Community Centre



A rather rare vacancy currently exists on Monday evenings, for any group wishing to book our Main Hall for a regular weekly slot. The room will be available between the hours of 6.00pm and 10.30pm and ideally we are looking to hire it out for a minimum of 2 hours.

For further information please contact Suzanne: 07547 539 310

All you might ever need to know about Potholes!

Marbury ward Councillor – Lynn Gibbon

Highways

Safety Inspectors regularly inspect roads and footpaths for dangerous potholes in line with the CWaC code of practice:

<https://www.cheshirewestandchester.gov.uk/your-council/policies-and-performance/council-plans-and-strategies/documents/highway-safety-inspection-code-of-practice.pdf>.

Also, Network Stewards investigate pothole enquiries and concerns raised by our customers including Councillors, Parish Councillors, and the public.

We prioritise potholes so that the most dangerous ones are repaired either the next day or within 5 days and for those that do not meet the criteria we have routine maintenance and resurfacing schemes in place, as per [Potholes and road faults | Cheshire West and Chester Council](#)

A useful guide to pothole repairs document is [ADEPT & DfT Potholes - a repair guide March 2019.pdf \(adeptnet.org.uk\)](#)

The majority of our pothole repairs are 50mm deep, cut out and fill, hot material permanent repairs. This involves cutting around the pothole and breaking away the loose material, then refilling with hot tarmac and compacting. A bitumen over-banding is used around the joints to help protect from ingress of water. On the odd occasion in emergency situations, we ask for a temporary fill and compact with cold tarmac, which is used to make safe until a permanent repair can be programmed.

We also use a range of techniques and materials to repair and maintain our roads to keep the borough's network moving smoothly.

Regards

Lynn

How to be sure a Waste Collector is disposing of your waste legally

We recently received this useful information from John Dyer, Police and Crime Commissioner for Cheshire. Worth a read if you are thinking of employing someone to dispose of waste for you.

John Dyer
Police & Crime
Commissioner
for Cheshire

DID YOU KNOW
Illegally dumped waste can be traced back to you and you could be fined up to
£5,000?

If you are looking to hire someone to collect your waste, ask them to provide:

- Their official company name
- Their waste permit number
- A waste transfer note

Whether you're in an urban or rural part of Cheshire, the sight and environmental impact of illegally dumped waste is not something residents should have to endure.

And for many of the criminals who dump this waste, it is far from their worst offence. We know that sinister gangs use seemingly legitimate waste disposal companies as a cover for

county lines and other serious criminal activity.

With a potential fine of up to £5,000 for illegally dumped waste that can be traced back to you, residents need to be vigilant and ensure they don't accidentally hand their waste over to criminals just because it seems convenient.

The Waste Crime Partnership is encouraging residents to ask three simple questions whenever a company pops up on sites like Facebook and Nextdoor, or knocks on their door:

- What is your official company name?**
- What is your waste permit number?**
- Will you be able to provide a waste transfer note?**

Any legitimate business should be able to answer these three simple questions. If they can't then residents shouldn't risk a potential £5,000 fine.

Your Waste Collector continued

Please do share this through your residents' networks and encourage them to be vigilant - by taking simple precautions we can protect our local communities and make it harder for serious criminals to operate in Cheshire.

If you have any questions about fly tipping and waste crime in Cheshire or the work of the Waste Crime Partnership, then don't hesitate to ask.

Office of the Police & Crime Commissioner
01606 364000

Email: pcc@cheshire.police.uk

Address: Clemonds Hey,
Oakmere Road, Winsford
Cheshire CW7 2UA



John Dwyer
Police & Crime
Commissioner
for Cheshire

Website: www.cheshire-pcc.gov.uk

Please help keep Wincham tidy

Please



**DO NOT
LITTER**

Thank You



**If your dog poops
but nobody is
watching,
you still need to
pick it up!**

Wincham, Pickmere and District Astronomy Group - Just look up!

I'm Rob Seymour, Chairman of the Wincham, Pickmere and District Astronomy Group.

You don't need anything special for star gazing, but the fun can be enhanced if you have binoculars or a telescope. On August 1st the sun sets about 9.00pm; by 31st October it sets at 4.40pm, so you won't need to stay up late then!

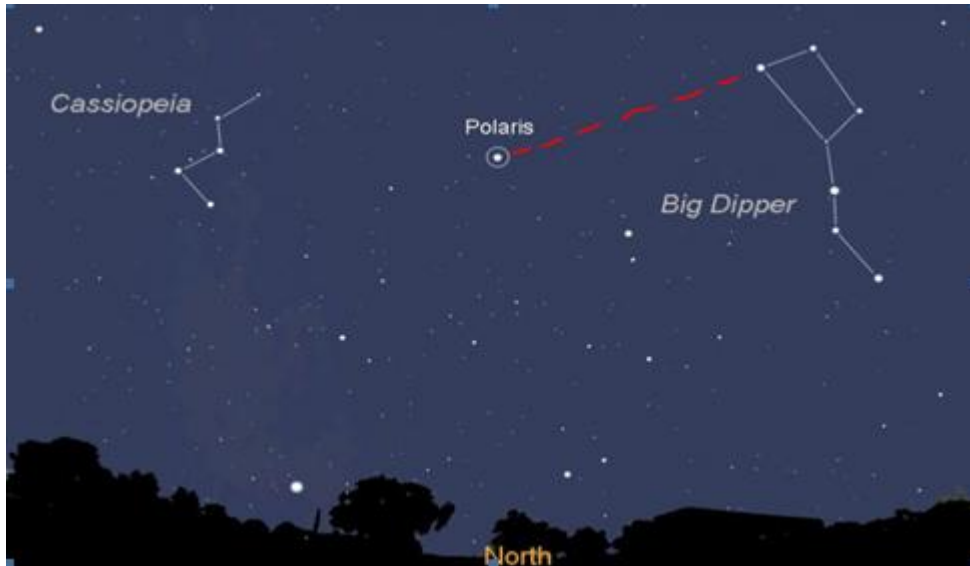
It has to be dark with as little cloud and light pollution as possible. The concrete strip on Linnards Lane playing field is quite a good spot, or your back garden with lights turned off. Your eyes will soon get used to the dark and the stars will start to appear.

It's amazing what you can see with your naked eye at different times of the year - the Moon, then cosmic stars in every direction, five solar planets (Mars, Jupiter, Saturn, Venus and Neptune) and sometimes man-made objects. At certain times of the year we can see shooting stars and, if the sky is very dark, nebulae.

The stars never move - we do, on a spinning Earth. The solar planets, which look like stars to the eye, move on their own orbits around the sun, as do we; only Polaris, the North Star, is ever in the same place throughout the year. However, all stars are in the exact same position at the same point in every year. For instance, at about 9pm in late February, Sirius (the night's brightest star) is low in the south. A few months ago there was a very bright star in the east, just after sunset. This was Venus; over the next few months it can be seen just before sunrise.

A good introduction to star gazing is to find north using the stars. First find The Big Dipper (also called the Plough and Ursa Major):

Wincham, Pickmere and District Astronomy Group - Just look up!



this star system or constellation will be low in the north sky; it has seven quite bright stars and is always visible to us in the north. The first two stars always point to the North Star (or Polaris). All the other stars rotate about this point. So, in February the Big Dipper will be above our heads. Through the night and the year, the Plough circles Polaris like the hands of a clock.

Always directly opposite the Plough is a group of stars which look like a 'W' - a constellation called Cassiopeia. In October it will be directly over our heads.

Seasonal highlights

In August we have two full moons (1st and 31st); when that happens, the second full moon is known as a Blue Moon, hence the expression 'once in a Blue Moon'. There is also a chance to spot lots of shooting stars called the Perseid Shower, especially over the nights of 12-13 August.

Finally, if you have a telescope you can see Jupiter and Saturn in the south at around 9 pm in October. To find them, it might be best to download a phone app such as the 'Night Sky'.

Wincham, Pickmere and District Astronomy Group



**We meet the first Thursday
of every month
(not August)
Wincham Community Centre
Church St, Wincham,
CW9 6EP
7pm to 9pm
All Welcome**

There will be a fee of £4 at all meetings
but under 11s are free.

Refreshments available

Any queries please contact Ged at

gedb@talktalk.net

www.facebook.com/WAPASTRO/

www.astronomyclubs.co.uk/Clubs/Details.aspx?ClubId=426



In June, Ged Birbeck wore his NASA Official Double Asteroid Redirection Test T-shirt, courtesy of our friend Derek Richardson who has done amazing, impressive and ridiculously successful work with this project.

Where can I go for tea and a chat?



St John the Evangelist, Lostock Gralam

CAMEO – Come And Meet Each Other!

Every Monday 2 – 4pm (apart from Bank Holidays)

St John the Evangelist Church Hall, Station Road, Lostock Gralam
CW9 7PS

An opportunity to meet people and have a chat over a cuppa and light refreshments.

Marston Village Hall

Tuesday mornings 10 am – 12 pm

Marston Church Hall, Ollershaw Lane

All welcome, bring a friend. Small donation appreciated for refreshments.

Pickmere Village Hall

Wednesday mornings 10.30 – 12.30

Pickmere Village Hall, Pickmere Lane

Everybody is welcome. Recent events have included guest speakers, plant sales and a trip to the Bluebell Cottage nursery and garden.

The Paint Shop at the Very Green Grocery



Looking for some paint? The Very Green Grocery at the Old School House on Manchester Road, Lostock Gralam, has an ever-changing collection of reclaimed, water-based paint for sale at bargain prices. Every tin is checked and has its colour painted on the lid; it is sold at a fraction of the original price and in proportion to the quantity of paint in the tin. The paint is on sale when the Community Cafe is open, 9 am to 1.30 pm Monday to Friday.

(You can check details on 01606 254090.)

Pickmere and District WI

'We meet monthly at Heyrose Golf Club, Tabley; we also go out for coffee or lunch once a month. We have members from Pickmere, Wincham and other areas. Visitors are always welcome, as are new members!'

Wednesday 26th July 7.30pm

Speaker Kate from Fryers Roses

Wednesday 16th August 6.30 pm

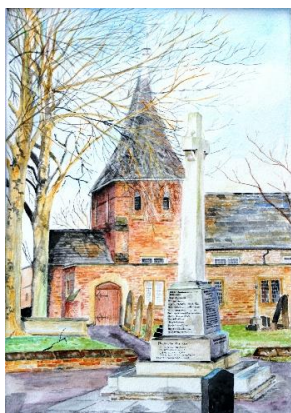
Meal at Hayhurst Arms

Come and join us, you would be very welcome!
Please phone me if you need more information
on 07825 268138.

Susan Ollier



The Parish of Lostock Gralam



 THE CHURCH
OF ENGLAND
Diocese of Chester

www.achurchnearyou.com/lostock-gralam-st-john-the-evangelist.



Lostock Gralam Parish

**Vicar: Revd Andrew Ridley, The Vicarage,
Church Road, Northwich 01606 42943**

arridley1@gmail.com

The Parish Church in Lostock Gralam is a spiritual home for the community of Wincham, so please read the following information as an invitation to you all to join us for worship and the events that we hold. Check us out by popping in for tea, coffee and toast at Cameo and Open Church.

Regular Sunday Morning 11 am Worship at St John's:

1st Sunday of the month: Worship Together Communion

2nd, 4th and 5th Sundays: Holy Communion

3rd Sunday: Café Church in the Church Hall. Tea, coffee, toast available.

Other worship:

2nd Sunday 2 -3.30 pm Messy Church – family worship with craft activities.

Monday afternoons: Church Hall at 2 pm: CAMEO. Come and meet each other for informal tea and chat.

Tuesday mornings: St John's Church is open from 9.30 am – noon for tea, toast and chat. Anyone is welcome to pop in. It is also an opportunity for quiet prayer and reflection.

Other events are planned and to be confirmed so look out for details on the Church Facebook page or contact Graham on 01606 42940. You are always welcome to any of our services and events.

Do not hesitate to contact Revd Andrew if you have any queries regarding weddings and baptisms. Graham Sheen (Parish Reader)

Coronation – Scarecrow Trail Winners



Coronation – Afternoon Tea

What a lovely end to the Coronation Bank Holiday weekend - a wonderful afternoon tea in the Community centre. It was great to see so many of our residents who bought tickets and came along to celebrate this special occasion. Thanks to all the helpers, these events always take a lot of work behind the scenes to help make everything run so smoothly - Sam, Susie, Kath, Annette, Andy, Alex, Ian, Debs, Janet and Debbie.

The fabulous music was provided by Ron, Marion, Brenda and Steve - thank you.





The Friends of Anderton and Marbury
Caring for and celebrating Northwich Woodlands



**THE MERSEY
FOREST**
more from trees

Northwich Woodlands Events Programme 2023

Monday 14th, Wednesday 16th, and Saturday 19th August Summer Family Fun

Once again, we are delighted to have three days of fun outdoor activities for all ages in the park. Whatever the weather, local environmental company Wilder Things will be running free, drop-in events suitable for all ages. Monday 14th August has a nature/arty crafty theme, Wednesday 16th is a nature trail with a difference and Saturday 19th sees the return of the crazy golf course, table tennis, bowls, basketball and an assortment of other park games. Located on the grass outside close to the Ranger Cabin, activities will be available from 11am until 3pm, so why not bring a picnic and stay all day? We have our new play area for younger visitors as well as miles of footpaths to explore through beautiful fields and woodlands. Children must be accompanied by an adult, but adults can come by themselves! For further information please contact: 07844 441441

melanie.bradley@cheshirewestandchester.gov.uk

Wednesday 6th September

Bat Talk and Walk

Come and hear about the different bats that live in Marbury Country Park and join a guided walk by Mike Freeman of the Cheshire Bat Group. Meet: 8.00 pm at the Rangers' Cabin/Marbury Lodge.

For information and booking contact:
Joanne Redley 07748 654013 or
email jarhillcliffe223@aol.com





The Friends of Anderton and Marbury
Caring for and celebrating Northwich Woodlands



Sunday 17th September

Marbury Through the Centuries

This guided and illustrated afternoon walk of about 2 hours around Marbury is suitable for all. The route has been chosen to minimise access difficulties. Along the way, you will catch a glimpse of the lives of those who lived and worked there from medieval times to the modern day. If the weather is bad, there will be a presentation in the meeting room behind the Rangers' cabin.

When booking, please advise us of access issues and we will endeavour to cater for them.

To book, please contact Brenda Yates 07941 710791.

This event is part of Heritage Open Days Festival 2023.

Saturday 23rd September

Fungal Hunts in Marbury Country Park

Fungal Punk Dave returns to Marbury for an unforgettable search for fungi large and small. Learn how fungi are vital to life as we know it (... and that the best place to forage for edible fungi is your local supermarket!).

Group numbers are limited so booking essential.

Morning and afternoon sessions.

Meet: Marbury Lodge, near the Rangers' Cabin.

For information/session times and booking contact: Brenda Yates 01565 733197



Wincham Community Centre



Registered Charity No: 510439



Monday

Parent & Toddler Group: Ages 0–4 year olds

9.15am – 11.15am.

Contact Anne on: 07738 129194

Tuesday

LEGO CLUB: A club for like-minded adult Lego fans to meet and display their LEGO Creations. Held once a month on a Tuesday 7pm – 9pm Interested? Email Nicola:

Nicola.kleiser@gmail.com



Wednesday

Knutsford Musical Theatre Co. 7.30pm – 10pm.

Contact: 07775 706847

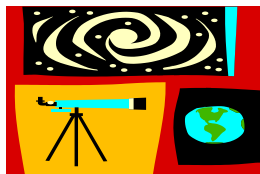


Thursday

Adult Yoga - Absolutely no experience necessary!

5.15 pm–6.15pm.

Contact Catherine on: 07860 130032



Wincham & Pickmere Astronomy Club:

1st Thursday of the month (except August) 7pm – 9pm

Contact Ged on: 07884 382830



Flower Workshop

For beginners and mixed abilities

Every 3rd Thursday of the month 7pm-9pm

Bookings in advance with Dianne on: 07842 057377

Wincham Community Centre continued



Saturday

Breakaway Dance Club: Sequence Dancing Social - Twice a month. 7.30pm – 11.00pm
Contact Dennis on: 01270 587210



Old Friends Club: **Celebrating 64 years!**

A social group for the retired
1st Saturday of the month 1.30pm – 4.00pm
Contact Lesley on: 01606 44185



Sunday

New Class : Belly Dancing Class

– no experience necessary

Last Sunday in the month: 10am-1pm.

All Welcome. Contact Lauren on: 07769 291920



Are you a member of a club or charity which needs a regular meeting place? If so, why not make enquiries to hire one of our refurbished meeting rooms?



Do you have a children's party imminent, but lack the space at home? Why not hold it here?

For bookings and information - call Suzanne on: 07547 539310



Check out our Website:

www.winchamcommunitycentre.org



Find us on Facebook:

[facebook.com/winchamcommunitycentre](https://www.facebook.com/winchamcommunitycentre)



Call Suzanne on: 07547 539 310

Tours of Chester Town Hall

Chester Town Hall will be opening its doors once more!

Enjoy a tour led by the Town Hall Keeper and get to know more about the history of the building, from its opening in 1869, right up to modern day uses and events. The tour will culminate with a civic regalia talk led by the Lord Mayor's Attendant, providing you with the opportunity to get up close to these unique treasures whilst learning about the history of the Lord Mayors and why they have a sword and mace!

[Regalia Talks and Tour of Chester Town Hall - Visit Cheshire](https://www.visitcheshire.com/things-to-do/regalia-talks-and-tour-of-chester-town-hall-p306261)

[<https://www.visitcheshire.com/things-to-do/regalia-talks-and-tour-of-chester-town-hall-p306261>]

Tours will be running on 12 August at 11:00 , 14:00 and 15:30.

The tours will be no longer than 1.5 hours.

Tickets available via the link or in person at the Visitor Information Centre located at the Town Hall.

Alice Richardson

Chester Town Hall Events & Marketing Manager

Great Budworth Cricket Club

The beautiful and idyllic ground at Arley is the home of Great Budworth Cricket Club. Matches are played between May and September and practice nets are held every Tuesday during the season.

The club is always looking for new members, either playing or social, or if you are a cricket enthusiast and would be interested in umpiring or scoring, please contact GBCCnewplayers@outlook.com.

All membership enquires to Membership Secretary

Alan Bailey: 01606 891149

<https://greatbudworth.com/great-budworth-cricket-club/>

Pickmere and Wincham Methodist Church

Pickmere Lane,
Pickmere, WA16 0JP
Minister: Rev Allen Mojo
Tel: 01606 554017
Church contact number: 01565 733543



We have a service at 10.45am each Sunday and all are welcome.

The first Sunday of each month is an all-age service, and our Harvest Thanksgiving all-age service this year will be on October 1st.

Our community rooms are available for hire for children's parties and other groups. Contact the number below for information.

Details of our church, services, contact details and other events will be publicised by our posters and on our website

www.pickmereandwinchammethodistchurch.org

and our facebook page [@PickmereAndWinchamMethodistChurch](https://www.facebook.com/PickmereAndWinchamMethodistChurch) or telephone 01565 733543, which is also our contact number.

If we can give any spiritual help please contact our minister on the number above.

Advertising in the Wincham Word.

For more details
contact our Parish
Clerk – details on
the back page.



Melanie Warren

TRAVEL COUNSELLOR

 01565 660018

 melanie.warren@travelcounsellors.com

 www.travelcounsellors.co.uk/melanie.warren



With us...it's personal

Useful Telephone Numbers

Abbeycroft Vets, Northwich	01606 40332
Age UK Cheshire	01606 881660
Alzheimer's Society	0300 369 0570
Buses: Northwich – Warrington Cat 9	01925 634296
Buses: Northwich – Knutsford No.89	01270 252970
Community Centre Bookings	07547 539310
CWaC General Enquiries	0300 123 8123
Eastfield Pharmacy, Lostock	01606 45485
Highways	0300 123 7036
Northwich Vets, Lostock	01606 359789
Pickmere & Wincham Methodist Church	01565 733543
Pickmere & Wincham Playgroup	07921 075139
Pickmere Parent & Toddler Group	07970 318837
Pickmere & District WI	07825 268138
Police Non Emergency and PCSO	101
Red Lion, Pickmere	01565 733247
St John's Church, Lostock	01606 42940
Salt Barge, Marston	01606 212525
Snow Angels	0300 666 6226
Street Scene	0300 123 7026
Wincham Community Primary School	01606 288060
Wincham Over 60s Club	01606 44185
Witton Albion Social Club	07841 792193

These numbers are provided in good faith. Please advise us of any changes. There are also many useful numbers for national associations etc in the front pages of the BT telephone directory.



WINCHAM PARISH COUNCIL

NOTICE OF PARISH COUNCIL MEETING

Meetings for 2023

Tuesday, 19 September 2023

Tuesday, 17 October 2023

Tuesday, 14 November 2023

Members of the public and press are most welcome.

Meetings commence at 7.30pm. Councillors are available for you to speak to from 7.15pm to 7.30pm.

The Parish Council Meeting full agenda will be available in advance of the meeting at www.winchamvillage.co.uk. Plus past minutes, past copies of the Wincham Word and other information.

Wincham Word

Deadline for submissions for the next editions of Wincham Word

Thurs, 12th October 2023 – covering Nov, Dec 2023 & Jan 2024

Thurs, 11th January 2024 – covering Feb, March & April 2024

Thurs, 11th April 2023 – covering May, June and July 2024

Thurs, 12th July 2024 – covering Aug, Sept and Oct 2024

Wincham Parish Council cannot be held responsible for any errors, misprints or opinions stated in this publication.

The views expressed by the contributors are their own and not necessarily the views of the editor.

We thank everyone for their contributions, we do appreciate them and will endeavour to include appropriate items in the next edition if space permits.

Your Wincham Parish Councillors



Chairman
Kenton Barker
07734 359806
Kenton.barker@winchampc.co.uk



Vice Chair
Ian Parr
01565 734226
ian.parr@winchampc.co.uk



Debs May
07847 187983
Debs.may@winchampc.co.uk



Will Shirley
07761 435579
Will.Shirley@winchampc.co.uk



Ros Casson
c/o 0161 926 8645
Ros.casson@winchampc.co.uk



Samantha Bethell
07971 602042
Samantha.Bethell@winchampc.co.uk



Peter Broder
07967 025027
Peter.Broder@winchampc.co.uk



Susie Schmidt
07725 431701
Susie.schmidt@winchampc.co.uk



Debra Kelly
c/o 0161 926 8645
Debra.Kelly@winchampc.co.uk

**Councillor
Vacancy**

**Councillor
Vacancy**



Parish Clerk—Naomi Morris
0161 926 8645
Clerk@winchampc.co.uk
22, Churchfields. Bowdon.
Cheshire. WA14 3PJ.

Working together makes us stronger

