

WINCHAM WORD

SPRING 2016

Working together makes us stronger



From Wincham Parish Council

Delivered free to every home & business in Wincham

News and information about our village and close neighbours



Photograph by Tim Whillans

Chairman’s Words by Councillor Annie Makepeace, Chairman of Wincham Parish Council

More things are happening to make our village even better: at the Community Centre we will be having a publicly-accessible defibrillator, also office facilities for our PCSO. The interactive speed signs will soon be installed. There are many other changes in the pipeline, but some are not going to be as quick as we deserve—like resolving the future of the Black Greyhound.

The best way we can move forwards with any project is through effective communication, so please share your opinions with us—contact details are on the back of this newsletter. Please come to meetings of your Parish Council, you will be very welcome. We value your support and feedback.

On a lighter note, we have Morgan and West, Time Travelling Magicians, performing here in April—details inside this newsletter. Book now, as 30% of tickets are already sold.

Happy New Year to you all and let’s make 2016 the best ever for Wincham.

Wincham Parish Council Meetings

Our monthly Parish Council meetings are open to the public. We have a public forum at 7.15pm before the meeting starts at 7.30pm. All residents who wish to voice their concerns about any issue or who want to discuss issues with a councillor or councillors are encouraged to do so at the Public Forum.

- ⇒ **Wednesday 17th February—Wincham Community Centre**
- ⇒ **Wednesday 16th March—Witton Albion**
- ⇒ **Wednesday 20th April—Wincham Community Centre**
- ⇒ **Wednesday 18th May—Wincham Community Centre**

Minutes and Agendas of the meeting can be found at www.winchamvillage.co.uk

Black Greyhound—The Latest

Since our last edition the roof has been torn off at the Bengal Dynasty. This happened in the January storms. Cheshire West and Chester Council were contacted due to safety concerns. Currently the site remains as is.

Where are the “plans” up to?

Countrywide Investments sought permission last summer to demolish the Black Greyhound and build 17 houses, but withdrew the scheme with the view to revised plans being submitted to Cheshire West and Chester Council.

They have not yet submitted a revised scheme, however they have drawn up a suggested plan for the site, showing 7 houses and a 2-storey building which could house a GP surgery, dentist or pharmacy; the upstairs could have 4 flats. (See plans overleaf)

Where “we” are up to?

A public meeting was held organised by Wincham Parish Council in January which allowed people a chance to view and comment on the “suggested plans” and raise concerns around building on Green Belt.

Potentially by offering to build a surgery/dentist or public amenity, it may give rise to extenuating circumstances to build in the Green Belt. If the developers were then unable to find someone for the surgery/dentist they may seek to vary the planning permission to change the use of that part of the site to housing.

Countrywide Investments were invited to the meeting. They declined as they were awaiting 3D graphics which they wish to use for their presentation to the council or at a public meeting.

Watch this space and we will keep you updated with any news. As soon as we hear anything we will let you know via Facebook and the Noticeboards.

The Parish Council would like to thank the indoor bowling club for giving up their evening on January 20th so we could use the big hall for the public meeting.



CURRENT SITE



Wincham Community Centre Update

Following the Annual General Meeting in November, we have a new Chair, Tony Henshall, a lifelong resident of Wincham. We also welcome new members to the Management Committee: Julie Reade (Village Rep), Cllr Dom Turner (WPC), and Chris Cenac (Village Rep). Other Management Committee members who were re-elected are: Laura White (Old Friends Rep), Lesley Greenwood (Village Rep), Joan Webb (Vice Chair), Diane Palin (School), Carl Bridge (Governors) and Sarah Henshall (PTA Rep)

We'd like to extend a huge thank you to Joan Webb, outgoing Chair who has been involved with the Community Centre for many years. Joan has kindly agreed to stay on as Vice-Chair this year.

Some of the highlights so far this year are:

- ◇ Office space for PCSO Hambleton—which means he can spend more of his working time in Wincham
- ◇ Broadband & WiFi for the Centre
- ◇ New Facebook Page— [Facebook.com/Wincham Community Centre](https://www.facebook.com/WinchamCommunityCentre)
- ◇ A defibrillator will be fitted on the wall of the Community Centre

Wincham Community Centre is a registered Charity. Our objective is *“to provide a Village Hall to be held in trust for the use of the inhabitants of the parish of Wincham without distinction of political, religious or other opinions, including use for meetings, lectures and classes, and for other forms of recreation and leisure time occupation with the object of improving the conditions of life for the said inhabitants.”*

With that in mind, we want to engage with the village to explore opportunities to further use the Community Centre for the benefit of the village. We now have a Facebook page where you can contact us with any ideas or suggestions. Also, you can e-mail us at ideas@winchamcommunitycentre.co.uk and we will discuss them at the next meeting.

Finally, we want to thank Suzanne and Malcolm who continue to keep things running smoothly for us all. For information about what's on at the centre please turn to page 18 & 19.

Changes to Wincham Post Office



Plans to change the Post Office to a “new-style” local branch—with all services being offered from “a low-screened, open plan-style service point integrated into the retail counter” have been shared with the public. Other changes include potentially extending the opening hours to 7am-10pm every day.

We know that many residents did put their comments to the post office. A number of people have concerns regarding the relocation of the post office counter to the main retail counter and the lack of privacy that may give.

These changes, and the changes inevitably to Spar, are due to take place in March/April. It is likely to be shut for up to 7 days whilst the changes occur. We are told a poster will go up in the branch at least 2 weeks before the planned changes detailing the date of work and nearest alternative post office.

We will share the dates on Facebook as soon as we hear.

Wincham Parish Precept

The 2016/17 Wincham Parish Precept has been agreed —this is the part of the Council Tax that is set and spent by the Parish Council.

The Precept is used for a number of things, including Cost of the PCSO, Park Expenses, Communications, Village Improvements, Clerk’s Salary amongst other things.

The Finance Sub-Committee of the Parish Council met in early January to recommend to set the 2016/17 Precept at £28,377. This figure was chosen after due consideration of the recommendations of Cheshire Association of Local Councils and the notification that the Council Tax Reduction Scheme grant from CW&C to top up the Precept for next year will again be reduced. Last financial year, the grant was reduced by 13%: the reduction for 2016/17 will be for a further 11% less. This was then voted on and agreed at the January Parish Council Meeting

Adding the reduced Council Tax Reduction Scheme Grant of £1,234 will give a total budget for Wincham for 2016/17 of £29,611. The Local Tax Base (the number of households in Wincham currently paying Council Tax) is currently 756. For a Band D property for 2016/17 the amount payable would be £37.54 – an increase of 31p on last year.

Update from the Bat Team

Road Safety Update



The working group involving the Bat Team, Parish Council, School & PCSO is regularly meeting to discuss issues across the village. Here is an update on some of the issues we're working on:

- ⇒ Highways are finalising the position for the interactive signs on Church Street and Pickmere Lane —they should be erected in the next few weeks.
- ⇒ Thank you to Wincham School and Mrs Miller's class for the campaign for a zebra crossing on Linnards Lane. Pupils made their case for the crossing directly to Highways Officers from Cheshire West and Chester Council. The visit was made following a flood of letters from Year 6 pupils to Highways.

Update: Wincham is unlikely to automatically qualify for a zebra crossing. The cost (if it was possible to have a zebra crossing) would be around £20,000. A survey could potentially be done at a cost. We are now looking at other options to make crossing roads safer.

- ⇒ Please can residents look at their hedges and trim back accordingly if they are causing obstruction to road or pavement users. Thank you to all those who have cut back hedges as it really makes a huge difference.
- ⇒ We are still looking at how pedestrians can cross safely at the Black Greyhound junction. The current sequencing of the lights makes it unsafe for pedestrians to cross.
- ⇒ A polite request to drivers to park responsibly across the village. Think carefully around Spar and parking on pavements/near junctions.
- ⇒ A notice went out in the Wincham School Newsletter reminding parents and carers to park considerately. There have been a few instances of parents being blocked in and having to wait for the other car owner to return. Also a reminder went out about parking inconsiderately and obstructing both the flow and the view of other drivers and pedestrians.

If you spot an issue around Wincham (e.g. street light not working, pot hole, blocked drain etc.) please report it to Cheshire West and Chester.

http://www.cheshirewestandchester.gov.uk/contact_us/report_it.aspx

or you can call on 0300 1238 123 (main switchboard, you will be asked which department you need.)

By each one of us taking responsibility to report problems when we spot them, it means that issues can be resolved more quickly.



School junior road safety officers Nat Pritchard-Jones and Catherine Lever with Highways Officers from Cheshire West and Chester Council



Wincham CP School children with their letters to Highways

Replacement apple tree

A damaged apple tree on Linnards Lane Playing Field will shortly be replaced by a Cheshire variety, Arthur W Barnes. It was raised in 1902 by the Head Gardener of the Duke of Westminster, N F Barnes, who apparently named two new varieties after his children, Arthur and Millicent. Young Arthur will take his place alongside Lord Clyde and Lord Derby. Left to ripen, the fruit should be crisp, sweet and juicy; the cooked fruit keeps its shape while young and cooks to a yellow puree when older. A cross between Gascoyne's Scarlet and Cox's Orange Pippin, this is a middle to late season fruit which should store until December. As with all our young trees, it will be some years before we can expect a crop!

Hedgehogs

The spells of warm winter weather have resulted in some hedgehogs waking up dangerously early. Their body weight is low and they may need to get through any harsh weather to come. They need food and water (milk is not good for them). Dog and cat food are suitable; hedgehogs love mealworms too. Peanuts should be chopped as whole ones have been known to block their throats.



Cat-sized holes in the fences will help the hedgehogs circulate safely through our off-road network of gardens. Ponds should be covered or at least have gently sloping sides so that hedgehogs can climb out if they fall in. Piles of leaves are useful for hedgehogs. Hibernation boxes need to be cat-sized.

A hedgehog seen out in the daytime is probably a hedgehog in trouble. Animal rescue centres such as Lower Moss Wood Nature Reserve and Animal Hospital at Ollerton, near Knutsford (01565 755082 <https://www.facebook.com/lowermosswoodwildlife>) may be able to help. If you visit, donations of newspapers, animal food and of course money will be put to good use.

To keep up to date with the latest HS2 news:

<https://www.facebook.com/MidCheshireAgainstHs2>

<http://mid-cheshire-against-hs2.co.uk/>

<https://twitter.com/mcahs2>



WINCHAM'S SCARECROW COMPETITION

It has been a few years since we last had a Scarecrow Trail in Wincham – but it is back by popular demand. Fancy joining in – making your own Scarecrow and join the trail?

Don't worry about your scarecrow needing to be a work of art – it really doesn't and with our four winning categories, everyone is in with a chance to win one of the prizes. This year's theme is film or television characters and they will be judged in the following categories – most colourful, funniest, most work and most inventive. The winning scarecrows will be voted for by members of the public who have purchased a trail map and each scarecrow can only win one category.

The Trail will run from Saturday 30th April to Sunday 6th May inclusive.

Costing just £1 to enter – please complete and return your entry form and fee to Debs May by Monday 18 April. Entry forms and trail maps will be available from Spar, Sarah Henshall and Debs May. (All monies collected will be put towards the Wincham Children Pizza Night fund).

To help and maybe give you some ideas – we are holding a Scarecrow Workshop on Wednesday, 6th April from 10am till 12.30pm at the Community Centre. It will be £1 per child (to help cover hire charges) and adults are asked to come along with their children to help with the sticking, stuffing and general creation. If you would like to attend the workshop – please email Debs May on debs.may@hotmail.com with the names and ages of your children.

So start thinking about your Scarecrow and help us make this Trail the best one yet.



Contact Debs May—07847 187983 or Sarah Henshall—01565 734778 or look on the noticeboards or on the Wincham Parish Post Facebook Page.



CLEAN FOR THE QUEEN

Clean for the Queen Saturday 5th March 1-3pm Linnards Lane Playing Field

We are taking part in the nationwide “Clean for the Queen” campaign this spring. The campaign was launched by Country Life magazine in partnership with Keep Britain Tidy to clear up Britain in time for the Queen’s 90th birthday in April.

We welcome all residents of all ages to come along to our “Clean for the Queen” event. We will meet at Linnards Lane Playing Field but will extend out across the village. There will be litter bags and grabbers available. All children must be supervised.

Look out on Facebook and on the noticeboards around the village for more details nearer the time. www.facebook.com/GothamWincham

Thank you to all who attended the litter pick in December. We want to continue with regular events during 2016 to keep our village looking lovely.

We would like to extend a big thank you to our regular volunteer litter pickers across the village and to everyone who does their little bit to keep Wincham clean and tidy.



Grass Verges

Thanks to all who look after our grass verges and avoid damaging them. Well kept grass verges are an asset to the village and are there for us all to enjoy.

School Anniversary

You may be aware that Wincham School celebrates the 120th anniversary of its formation and the 40th anniversary of being on the current site this year.

At 2pm on the afternoon of Tuesday 1st March former pupils are invited to come along to an afternoon tea in the Community Centre in order to meet each other and to share their experiences of the school.

Mrs Palin is keen to build up an archive of photos and any other artefacts that are relevant, to be displayed at the celebrations later in the year. Please let any former pupils know about this - they should contact the school office if they wish to attend. The school office number is: 01606 288060



Join with other Wincham businesses for the Wincham Parish Council Business Breakfast and network with local business professionals while enjoying a hot breakfast.

We will also be discussing the Wincham Business Directory which we are compiling currently and how we may be able to support businesses across Wincham.

For more information please contact Naomi Morris – Parish Clerk -
winchampc@talktalk.net

Thursday, 24th March 2016
Thursday, 26th May 2016
Thursday, 22nd September 2016
Thursday, 24th November 2016

Please put these dates in your diary and we do hope you can join us.

Fundraising Thank You

By Becky Seymour

Some of you might know, my friend Amber and I have been collecting money for the homeless. We raised the money by baking cakes and biscuits, washing cars and selling tickets for a raffle - the prize being a hamper. We would like to say thank you to all of the people who generously answered the door and gave us money for charity. Well done to the winner of the hamper, Colin Statham. We have finally reached our total of £100 and hopefully soon we will be going to the streets of Manchester and helping out the homeless by giving them warm blankets, food and water. Once again thank you everyone who took part and have a good 2016.



Becky and Amber with Colin

Photography Challenge

The Wincham Word is published every 3 months, and we would like our cover picture to be a photograph taken by a resident, to celebrate our village.

Wincham is a beautiful village with a long history, recorded in the Domesday book. We have a diversity of wildlife and scenery which we should encourage people to stop and take a closer look at.

Themes and Deadlines as follows -

"New Life" April 9th

"Tranquillity" July 9th

Entries to Ian Parr either as email - jpegs please - to ianparr@btopenworld.com OR as 6x4 photo to 19 Kingfisher Grove.

Entries which include pictures of children must have written permission from parent/guardian for the un-named image to be published. As the photographs are intended for publication, it is a condition of entry that Wincham Parish Council may use the image.

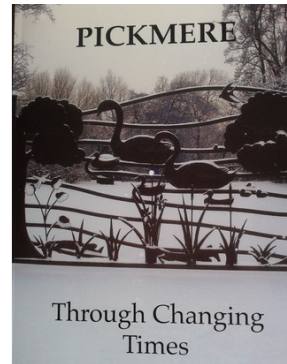
Pickmere Through the Years

Pickmere resident, photographer and local historian Joseph T Robinson has brought together a collection of photographs which reflect the changes to the area in the last 60 or so years and published them in a beautiful new book: *Pickmere Through Changing Times*.

Joe moved to Pickmere as a child in wartime, and those who meet up with Joe at the lake will appreciate the depth of his local knowledge. The introduction and captions give an affectionate insight into local life within living memory and up to 2015. Black and white photographs of the Red Lion, Well Cottage, Lakeside House, the Princess Irene, the fairground and the chalets give way to colour photographs of more recent times and events.

Joe has now published eight local history books, including one on the history of Wincham, no longer in print.

Pickmere Through Changing Times is a limited print run of 150 copies and costs £20. It is available only from Joe on 01565 733182 or Chris Tarrant on 01565 734246.



Wincham Family & Friends' School Summer Fayre

Our Annual Summer Fayre is on Saturday 9th July 2016. It is the biggest event in the school's calendar and raised nearly £6,000 last year for the children.

We are looking for local businesses to advertise in our programme. The programme is professionally designed, in full colour and will be given out to each family in the school as well as everyone else attending the fayre. They will feature information about the day plus advertising from local businesses.

We are also looking for prizes for our grand draw raffle. Could you help with this? Your company name will be acknowledged either on the raffle tickets or in the programme.

To find out more about advertising or to donate a prize please contact the Summer Fayre Team at summerfayre@btinternet.com.



Registered Charity: 518686

How I remember Wincham as a child

Marston resident Sue Wallworth shares her memories and brings to life the Wincham Lane and Chapel Street of her childhood.

Chapter 1

A lot has been written about Old Wincham. This is how I remember it.

I was born in Applemarket Street, Northwich. My mother decided to bring the family out of the town, where TB and bronchitis were prevalent, to cleaner air. I was 8 months old and my sister was 3 years old. We lived at 8a Wincham Lane, opposite the vacuum plant (New Cheshire Salt Works), long gone now. During the war, Stubbies, as it was known, had a secret test bed there for jet engines – I used to think everybody's bed lifted off the floor with the silent vibrations!

But to start at the beginning – The Black Greyhound pub at Wincham crossroads was run by a Mrs Dolby. Walking down Wincham Lane, on the left were a couple of cottages set back off the road; I think a family of Smiths lived in one. Where the lock-up units are now, was another cottage where Mr Bannister lived; his garden was covered in daffodils in the spring.

Over on the right were the Timps houses. The Gibbons family lived in the first one. Sadly, I only remember a few of the people living in them. One was a Mr Painter who had a vegetable garden across the road; early on a Sunday morning, I was dispatched with three old pennies to buy a cabbage or whatever was ready for picking for Sunday lunch. There were also the Athertons and the Henshalls.

Across the road was a brine pumping engine, beautifully polished, but the noise was dreadful; most of the time the doors were locked to stop children, I suspect, from climbing onto it.

Next was Thompson's Road, as it was known in those days (now Wincham Avenue); it was named after J B Thompson, who had a salt works at the top of the lane. I learned to ride a bike on the lane.

Along the side of where we lived, on a site now occupied by Paul Trevor's business, were seven cottages. We lived at the back of where Northwich Vics football stadium was built. It was a football pitch long before the Vics. (My two brothers used to make me stand in goal while they ran around kicking the ball; when it was cricket, I did the running.) In those houses were the Bayleys (our next door neighbours), and at the front were the Johnsons, the Mumfords and Miss Parks; Miss Parks was sister to the man who owned Parks steelworks, where B and Q now stands. There was a stretch of grass we used to play on, then there was the Holland family and next door were the Thompsens.

To be continued.....

Book Your Tickets NOW for Show Coming to Wincham

Time-travelling Victorian magic act Morgan and West are bringing Parlour Tricks to Wincham Community Centre on Friday, April 22, at 7.30pm. Tickets are all priced at £8 each.

Morgan and West describe themselves as “magicians, time-travellers and all-round spiffing chaps,” and said their new show was chock full of “jaw-dropping, brain bursting, gasp-eliciting feats of magic.”

“The dashing chaps offer up a plateful of illusion and impossibility, all served with wit, charm and no small amount of panache. Be sure to wear a hat – Morgan and West might just blow your mind,” they said.

People are being invited to bring along their children to enjoy this spectacular and unconventional family show.



Picture by Steve Ullathorne

The show is being put on by Wincham Village People, which is hoping for another wonderful evening following the sell-out success of Holy Moly and The Crackers last November.

Please ring 01565 734226 for tickets - front seats will go to those who book first.

To find out more about Morgan and West visit their website at :
www.morganandwest.co.uk

WINCHAM COMMUNITY CENTRE



Registered Charity No: 510439



"A Happy New Year from Us All"



2016- Fancy being a little more active this year?

The centre has developed close links with **Active Cheshire** (A registered Charity) whose goal is to get 50,000 more people, more active, more often by 2017. Why not join one of the many groups to support this positive approach to a healthier lifestyle: Dancing, Bowling, Cycling & the Ramblers.



Children's Parties – Fancy avoiding all the mess at home? Then book your child's party at the centre. Our main hall allows children to tear around and let off steam without breaking valuables at home and with excellent kitchen facilities, a stage and ample parking, it's no wonder parents are regularly booking in!

Don't forget - When you hire the centre there is no additional charge for the Kitchen Area

Are you a member of a club or charity who needs a regular meeting place? If so, why not make enquiries to hire one of our meeting rooms –with self-controlled heating.

Our Committee room is just £4.00 per hour and hold up to 12 people.

Need something bigger – Then try our Clubroom which holds up to 25 people for just £4.95 per hour and includes full use of the kitchen area.



We have now completed our internal signage - Making life easier and clearer for all users.

For all booking enquiries please contact:

Suzanne James on 07547 539 310



Find us on
Facebook

Facebook.com/WinchamCommunityCentre

Find out what's on and latest news from Wincham Community Centre.

Regular Events Held at Wincham Community Centre

- Monday** **Latinos Dance Group** - Latin, American & Modern
8pm – 10pm Frank Diamond - 01606 860921
- Tuesday** **Latinos Dance Group** - Latin, American & Modern
8pm – 10pm Frank Diamond - 01606 860921
- Wednesday** **Village People - Art Class** Wednesday 10am -12 noon.
Contact - Annie Makepeace 01565 734226
- Indoor Bowling** Wednesday 7pm – 9pm. (until 16th March)
Contact - Carol Davies 01565 733565
- Thursday** **Parent & Toddler Group**
9.15am - 11.15am Sue Dyson 01565 733049
- Sequence Dancing**
8pm – 10.30pm. Contact - Jean Duncalf 01565 733178
- Saturday** **Breakaway Dance Club** - Sequence Dancing - **All Welcome**
Twice a month. Malcolm Rutter - 01606 755661
- Old Friends Club** - 1st Saturday in every month
A social group for the retired with a variety of activities.
1.30pm – 4pm. Contact Lesley 01606 44185
- Sunday** **Afternoon Tea Dances**
Once a month: 2pm – 5pm. Contact Fred Boast - 01606 834492

Notes for your Diary on Forthcoming Events:



Race Night Saturday 12th March 2016

In aid of Northwich Victoria Juniors FC

Tickets: **in advance only** - £2.50 ADULTS /£1.50 CHILDREN

Doors Open at 7pm – Starts: 7.30pm

Contact: Rob/Alistair at www.northwichvicsjfc.co.uk



Rotary Club of Northwich - Barn Dance

Friday 10th June 2016 7pm - 11-30pm -With Bar

In aid of Presidential Charity & Polio eradication campaign.

Tickets: £15 includes supper & band. **Contact: Elizabeth 01606 74856**

DATES FOR YOUR DIARY

FEBRUARY

Tue 16th and Wed 17th—Love Bugs and Stained Glass Hearts. 10.30am-12.30pm and 2-4pm, drop in. Lion Salt Works. Suggested donation £1.50. (Half Term) Call 01606 275040

Wed 17th—Wincham Parish Council Meeting—7.30pm (7.15pm public forum) - Wincham Community Centre.

Sat 20th Art and Industry, 2.30 - 4.30 pm Lion Salt Works: Adrian Sumner, Rebecca Gouldson, Diane Bernice Tackley. Free but booking essential: 01606 275040 www.eventbrite.co.uk/e/art-industry-tickets-19509049091

Wed 24th—Pickmere WI Monthly Meeting—7.45pm. Pickmere Village Hall.
Speaker: Jane Burkinshaw Talk entitled: My Visit to a South African School. Contact Joyce Kirkpatrick on 01565 733200.

MARCH

Tues 1st—Wincham School Afternoon Tea—2pm. Wincham Community Centre.
See Page 13

Sat 5th—Clean for The Queen—1-3pm Linnards Lane Playing Field. See Page 12

Fri 8th—We are Bronte (Publick Transport Theatre) at the LSW. 7.30pm-8.30pm. £8 for adults, £6 for 16 and under (show suitable 12+) Book at Lion Salt Works.

Mon 14th— FoAM Talk by Clive Brookes: The Prisoner of War Camps at Marbury Hall and Comberbach 1944 -1948. Meet: 7.30 pm Comberbach Memorial Hall www.foam.merseyforest.org.uk

Wed 16th—Wincham Parish Council Meeting—7.30pm (7.15pm public forum) - Witton Albion.

Thurs 17th - Pickmere Photographic and Heritage Society, 7.45 pm Pickmere Village Hall. Brief AGM followed by talented Wincham amateur photographer Ian Parr: slide show and discussion of his photography. Visitors welcome. Further info: 01565 733200

DATES FOR YOUR DIARY

MARCH CONT.

Fri 18th Lion Salt Works 7.30 - 8.30 pm *We are Bronte* by Public Transport Theatre (Cheshire Rural Touring Arts) £8 (£6 under 16) suitable 12 and over 01606 275040 <http://events.westcheshiremuseums.co.uk/event/publick-transport-theatre-we-are-bronte/>

Wed 23rd —Pickmere WI Monthly Meeting—7.45pm. Pickmere Village Hall. Speaker: Melinda Grant Talk entitled: Ageing and Exercise. Contact Joyce Kirkpatrick on 01565 733200.

APRIL

Wed 6th—Scarecrow Making Workshop—10-12.30am—Wincham Community Centre. See Page 11

Wed 6th to Sat 9th—UNLEASHED, comedy by John Godber. Knutsford Little Theatre, Queen St Knutsford. www.knutsfordlittletheatre.com

Wed 20th—Wincham Parish Council Meeting—7.30pm (7.15pm public forum) - Wincham Community Centre.

Thurs 21st - Pickmere Photographic and Heritage Society, 7.45 pm Pickmere Village Hall. Topic to be announced. Submission of photographs for annual competition (to be judged at May meeting). Visitors welcome. Further info 01565 733200.

Fri 22nd—Morgan & West - 7.30pm at Wincham Community Centre. See Page 17

Sat 23rd— FoAM—Spring Time in Marbury Country Park. A guided walk at this wonderful time in the park to see the early woodland flowers. Meet: 10.00 am at the Rangers' Cabin / Marbury Lodge. For information contact: Mary Jeeves 01606 77688

Wed 27th —Pickmere WI Monthly Meeting—7.45pm. Pickmere Village Hall. Speaker: Vicki Boardman Talk entitled: Cupcakes Contact Joyce Kirkpatrick on 01565 733200.

DATES FOR YOUR DIARY

MAY

Sat 7th - FoAM—Dawn Chorus Walk, Marbury Country Park. Join the walk at either 4.00 am or 5 am at the Rangers' Cabin / Marbury Lodge. For information contact: David Bullock 01606 781981.

Mon 16th—FoAM AGM, Quiz and Supper. Meet: 7.45 pm Comberbach Memorial Hall. There will be a charge for supper. All welcome. Booking essential. Contact: Anna Cooper 01606 891683

Wed 18th—Wincham Parish Council Meeting—7.30pm (7.15pm public forum) - Wincham Community Centre.

Thurs 19th - Pickmere Photographic and Heritage Society 7.45, pm Pickmere Village Hall. Judging of annual competition - a chance to see photographs taken by local people and hear the judge's views. Visitors welcome. Further info 01565 733200.

Wed 25th —Pickmere WI Monthly Meeting—7.45pm. Pickmere Village Hall. Speaker: Judith Kennedy Talk entitled: Aromatherapy. Contact Joyce Kirkpatrick on 01565 733200.

Sat 28th and Sun 29th FoAM—Bring and Buy Plant Sale, Marbury Country Park. Come and find something for house or garden at FoAM's amazing plant sale. All surplus plants will be welcome. From: 10.00 am – 4.00 pm at the Rangers' Cabin / Marbury Lodge. For information contact: Jim Jeeves 01606 77688

Let us know if there is a local event happening by either contacting us on Facebook (Wincham Parish Post) or e-mail winchamword@hotmail.com

New Bereavement Support Group—Dove Service

The people of Northwich and surrounding areas will be able to access a new bereavement support group from the 25th November 2015. Based at the Victoria Road Children's Centre, Neumann Street Northwich, the Dove Service group will meet fortnightly from 5.45-7.15pm and will welcome anyone who is coping with a bereavement or significant loss. The group will be run by 2 volunteer bereavement facilitators from the Dove Service. To refer yourself please call 01782 – 683155.

Public footpaths in and around Wincham

We are fortunate in having a substantial network of Public Footpaths in and around Wincham, many of which cross farmland and give access to beautiful areas such as Pickmere Lake. All Wincham and Pickmere Public Footpaths are signposted at the point where they leave the road. Some are very muddy at certain times of year. Please keep to the paths, keeping dogs under close control, especially where there are farm animals, and be sure to clear up after your dog on a Public Footpath, just as you would expect to on a pavement.

The footpaths from Earles Lane and Pickmere Lake are very popular: the one nearest to the crossroads goes to the top of the lake and the second and third go directly to the lakeside. They join up with a footpath running along the lakeside which links the Pickmere end of the lake to Dark Lane at Marston. It's very muddy in parts at present although generally fine in summer.

Ordnance Survey *Map Explorer 267 Northwich and Delamere Forest*, available in Smiths, is an excellent investment and shows exactly where the public footpaths are.

Another excellent resource is the interactive map on the CWaC website; you can expand the map to show fine detail: search for your postcode or 'Wincham', choose Map Data, then Leisure and Culture and finally Footpaths.

<http://maps.cheshire.gov.uk/cwac/interactivemapping/>

Keep Up To Date in Wincham Online!

- ◇ Facebook.com/Wincham Parish Post - news for Wincham
- ◇ Facebook.com/Wincham Village People Present—news on events
- ◇ Facebook.com/Wincham Walks and Wildlife
- ◇ Facebook.com/Gotham Wincham—Road Safety and Cleanliness
- ◇ Facebook.com/Wincham CP School—school news
- ◇ Facebook.com/ Wincham Gardening Club—all things gardening
- ◇ Facebook.com/Wincham Community Centre



Not on Facebook but online: www.winchamvillage.co.uk

Not online—we have our noticeboards, Wincham Word & Parish Council Meetings.

moulton drama group presents:

HAYWIRE

Tues 8th until
Sat 12th March

7.30pm (Doors Open 7pm)
Moulton Village Hall

Tickets: £7.50 (8th & 9th)
£8.50 (10th, 11th and 12th)

Directed by John Powell



LICENSED BAR . DISABLED ACCESS

ticket line:
01606 594178
or
www.danarts.org/events

For information about past & future productions visit: www.mdg.org.uk

Moulton Village Hall, Main Road, Moulton, Northwich CW9 8PB

MDG is a registered charity No. 515656

Historic Maps on-line

For those interested in local history, an interesting resource is <http://maps.cheshire.gov.uk/tithemaps/TwinMaps.aspx>, where you can compare 1836 - 1851 Tithe Maps with 1875 and 1910 Ordnance Survey maps and contemporary maps.

We Are Brontë

Lion Salt Works are delighted to host Publick Transport Theatre for their show 'We Are Brontë' on Friday 18 March 2016 at 7.30pm.

'We Are Brontë' is a piece of comic visual theatre inspired by the real and imaginary worlds of Yorkshire's literary siblings, presented in Publick Transport's irreverent style.



Physical theatre collides with stand-up, clowning and improvisation as two performers deconstruct not only gothic themes of love, madness, repression and revenge, but also themselves. Part play, part enquiry into the act of putting on a play, this promises to be no ordinary Brontë adaptation.

This show is suitable for those 12+ and has a running time of one hour.

The show is part of the Cheshire Rural Touring Arts - Spring 2016 season.

<http://cheshireruraltouringarts.co.uk>

To book tickets: Visit Lion Salt Works or call them on 01606 275040 or visit www.ticketsource.co.uk/cheshireruraltouringarts

Friends of Anderton and Marbury Photographic Competition 2016

FoAM is running its regular competition with a closing date of 31st December 2016. This competition is for photos taken in the Northwich Woodlands. The categories for entries are Wildlife, Landscape and Work, Rest and Play. There is a new entry group for video clips in the same categories. These must also be taken in the Northwich Woodlands and have a maximum duration of 30 seconds; they can be accompanied by a soundtrack if desired. Full details and rules can be found on www.foam.merseyforest.org.uk. Further information can be obtained from Jim Jeeves 01606 77688 or jim.foam@icloud.com



GHA Coaches (45 +289 buses)

www.ghacoaches.co.uk 01978 820 820

Network Warrington (46 bus)

www.networkwarrington.co.uk 01925 634296



CCS Ltd
01565 733302

Complete Computer Solutions
A More Than a Hobby company

58 Church Street
Wincham
Northwich, CW9 6EP

mtah2005@gmail.com



**NO PROBLEMS,
ONLY SOLUTIONS.**



domturner1977@gmail.com iandougall@yahoo.com
07976 186047 07532 365828

**IMPROVE YOUR BANK BALANCE
AND YOUR LIFESTYLE...**



Ashwood Park is situated near the famous market town of Northwich and is surrounded by wildlife and stunning views. For many of our residents, such a move to park home living has provided financial security and the means to enjoy the perfect retirement lifestyle.

www.tingdene-parks.net
01933 741933



Simon Barton, your local Chimney Sweep
Discounts for local residents - Clean Reliable Service - Fully Insured

The build up of soot and tar in a chimney can catch on fire. Therefore it is recommended chimneys are swept:
3 Monthly Wood Burning Stoves
6 Monthly Bituminous House Coal
12 Monthly . . . Smokeless Fuel / Gas & Oil Fired Appliances
(Cleaning frequency as recommended by the National Fireplace Association)



A Clean Chimney is a Safe Chimney
Call me today to book your appointment on:
01565 849 232

Vector
Vehicle systems

Auto Electrical & Diagnostics Specialist
Quality Servicing & Repairs



INDEPENDANT REPAIRER
Tel: **01606 331737** Mercedes Benz smart

Concraft Business Park, Chapel Street, Wincham, Northwich, Cheshire, CW9 6DA

Anything you need for your car

Accident repairs, servicing and MOTs

NewPlattMotors | npm
INDEPENDENT VEHICLE REPAIRERS

01606 331131



Archive & Document Storage
Document Scanning & Hosting
Media Vaulting
Confidential Destruction

t: **0800 028 8956** e: info@dataspace.co.uk

REMOVALS & STORAGE



ROY TREVOR

Contact us today to get a FREE assessment and quote
info@roy-trevor.com
 tel: **01925 630 441**

Wincham Parish Council accepts advertisements in the Wincham Word. It costs £20 an edition for an advertisement the size of a business card. Please contact Naomi Morris—Parish Clerk (details on back page)

Useful Information & Contacts

CW&C Councillors

Lynn Gibbon 01606 784599

Lynn.Gibbon@cheshirewestandchester.gov.uk

Norman Wright 01606 74788

Norman.wright@cheshirewestandchester.gov.uk

Don Hammond 01606 891397 07977 223330

Don.hammond@cheshirewestandchester.gov.uk

Cheshire West & Chester Council

Mon-Fri 8am-7pm and Sat 9am-12.30pm

Online at www.cheshirewestandchester.gov.uk

General Enquiries 0300 123 8 123



PCSO Phil Hambleton

Call: 0845 458 6378 (voicemail service)

Email: philip.hambleton20376@cheshire.pnn.police.uk

Emergency call 999, Non Emergency call 101

To contact the Editorial Team for Wincham Word:

e-mail: winchamword@hotmail.com

Telephone or written contact via the Parish Clerk.

Deadline for submissions for the next edition— 9th April 2016

Wincham Parish Council cannot be held responsible for any errors, misprints or opinions stated in this publication. The views expressed by the contributors are their own and not necessarily the views of the editor. We thank everyone for their contributions, we do appreciate them and apologise if an item does not go into the next edition—we are limited by space.

Your Wincham Parish Councillors



Chairman Annie Makepeace
01565 734226
pakamak@icloud.com



Vice Chair Kenton Barker
07734 359806
kentonjbarker@yahoo.co.uk



David Pugh
01565 733302
morethanahobby@yahoo.co.uk



Dominic Turner
01565 734394
domturner1977@gmail.com



Ian Parr
01565 734226
ianparr@btopenworld.com



Sarah Henshall
01565 734778
sarah@henshall.net



Debs May
07847 187983
Debs.may@hotmail.com



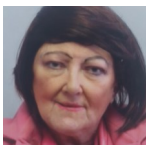
Ros Casson
c/o 0161 926 8645
c/o winchampc@talktalk.net



Frank Smith
01565 733663



Brian Cooke
01565 734487



Dee Cooke
01565 733487



Parish Clerk—Naomi Morris
0161 926 8645
22, Churchfields. Bowdon. Cheshire. WA14 3PJ.

Working together makes us stronger



www.winchamvillage.co.uk



Facebook.com/Wincham-Parish-Post